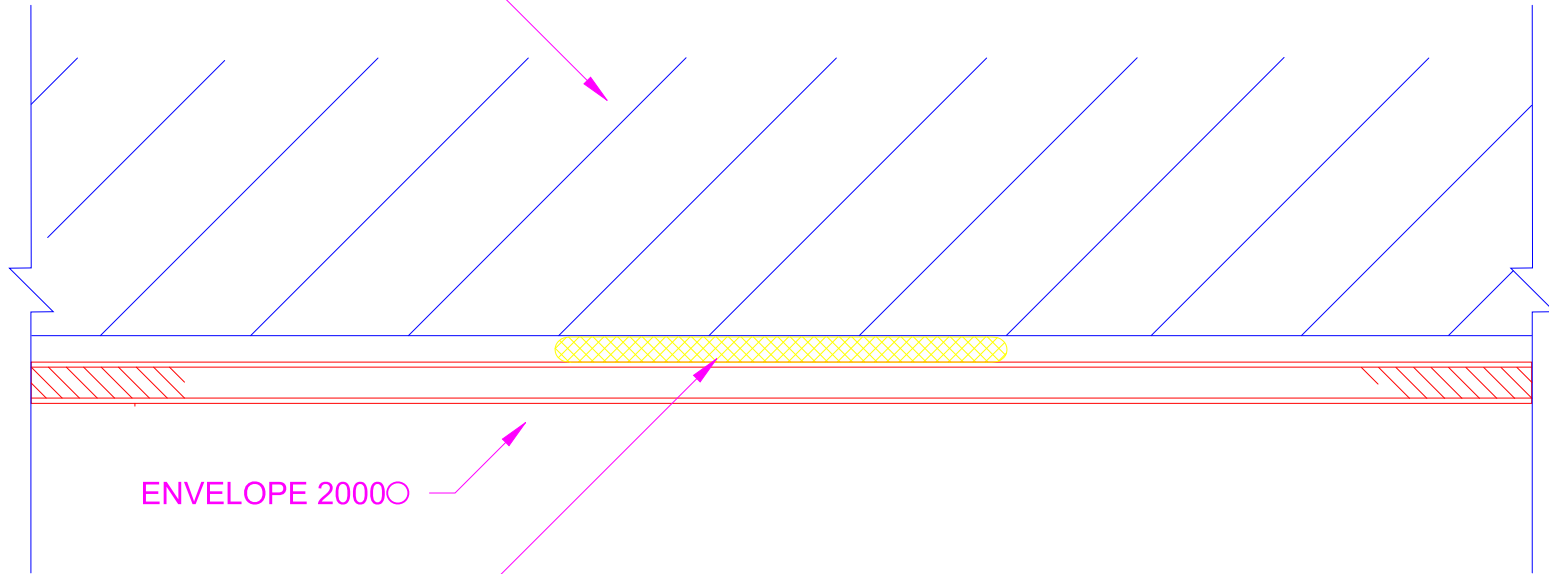


NOTE:  
FOR NON-NAILABLE SUBSTRATES,  
FASTENERS MUST BE USED ONLY  
AT STUD FRAMEWORK LOCATIONS.

NAILABLE SUBSTRATE  
(BY OTHERS)



ENVELOPE 20000

APPROVED  
CONSTRUCTION  
ADHESIVE  
(BY OTHERS)

NOTE:  
IF MOISTURE BARRIER IS NOT  
PRESENT, OMIT FLASHING  
AND PLACE ADHESIVE DIRECTLY  
ONTO NAILABLE SUBSTRATE.

5

## INTERMEDIATE CONNECTION