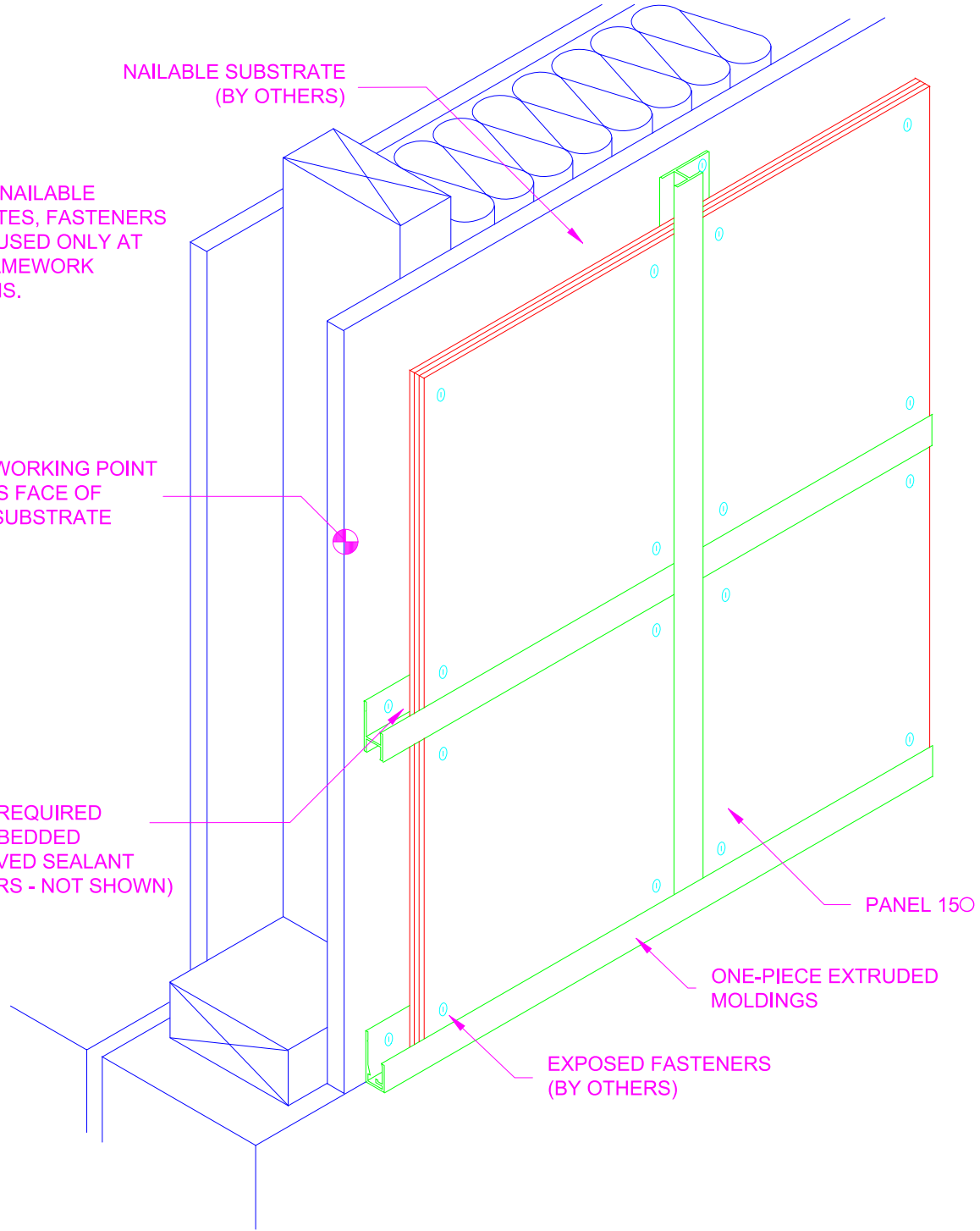


NOTE:
FOR NON-NAILABLE
SUBSTRATES, FASTENERS
MUST BE USED ONLY AT
STUD FRAMEWORK
LOCATIONS.

WORKING POINT
IS FACE OF
SUBSTRATE

NOTE:
PANEL IS REQUIRED
TO BE EMBEDDED
IN APPROVED SEALANT
(BY OTHERS - NOT SHOWN)

NAILABLE SUBSTRATE
(BY OTHERS)



1 SYSTEM ISOMETRIC